



# Installation Guide

iPoint - Server

PresentationPoint

# Table of Contents

1	INTRODUCTION	3
1.1	PURPOSE	3
1.2	SYSTEM PREREQUISITES	3
2	INSTALLATION	4
2.1	SOFTWARE PACKAGE	4
2.2	INSTALLATION	4

---

# 1 Introduction

---

## 1.1 Purpose

The iPoint server is a server process that runs in background on the server computer without user interface. It handles all requests from the scheduler and player components.

The server process is running as a Windows service. The server process is typically installed on a server computer that is practically always up and running.

---

**Note:** For a single player installation you can install the server, scheduler and player components on the same computer.

---

---

## 1.2 System prerequisites

- Windows Server 2003; Windows Server 2008; Windows Vista; Windows XP; Windows 7
- Microsoft .NET Framework 3.5 Service Pack 1

---

## 2 Installation

This topic describes how to install the iPoint server software.

---

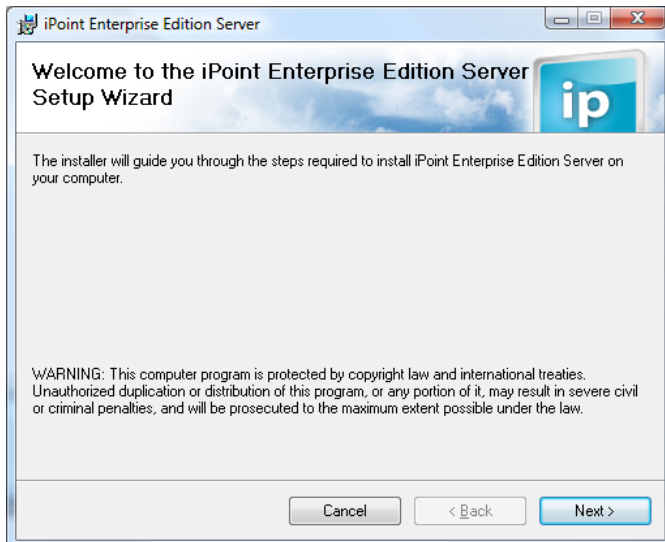
### 2.1 Software package

The iPoint server software can be retrieved from the PresentationPoint website. Click Software > iPoint > Download from the menus. You can also get it from the PresentationPoint cdrom when ordered. There is no difference in functionality between the trial version and the full licensed version.

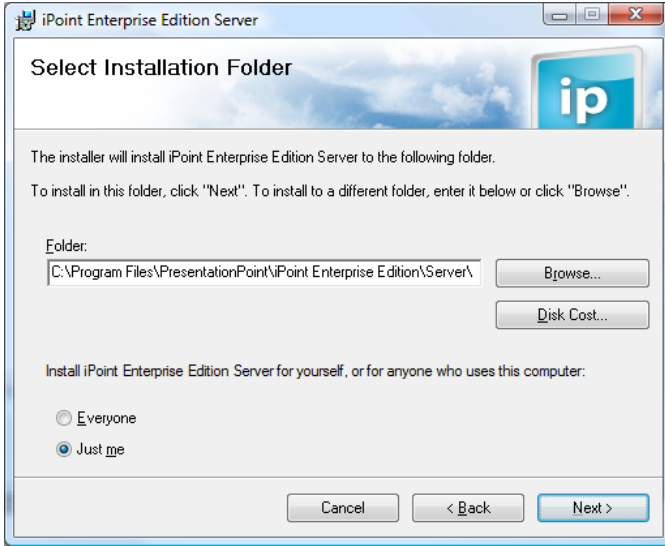
---

### 2.2 Installation

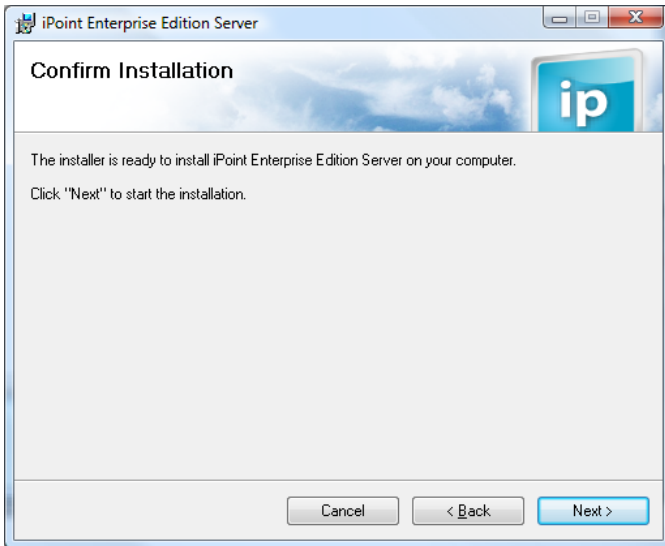
Extract the zip file and start the setup.exe program. This will launch an installer that will guide you through the installation process.



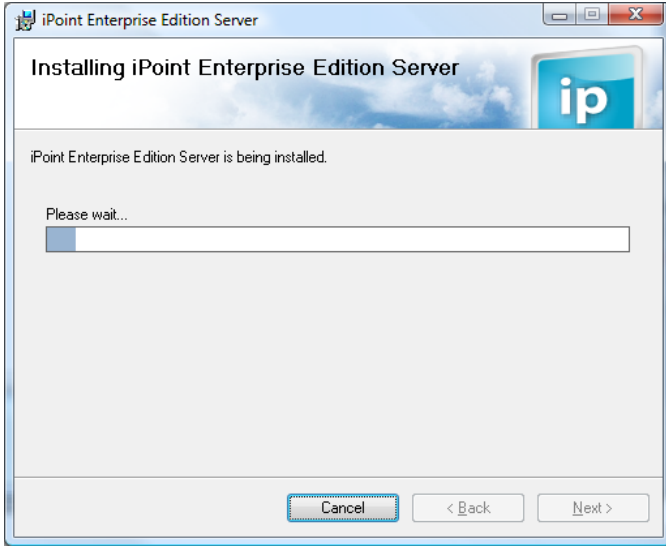
Click Next.



Check the default installation folder and click Next.



Click Next now to start the installation.



At the end of the installation process, a configuration wizard will be launched.



Click Next to continue.



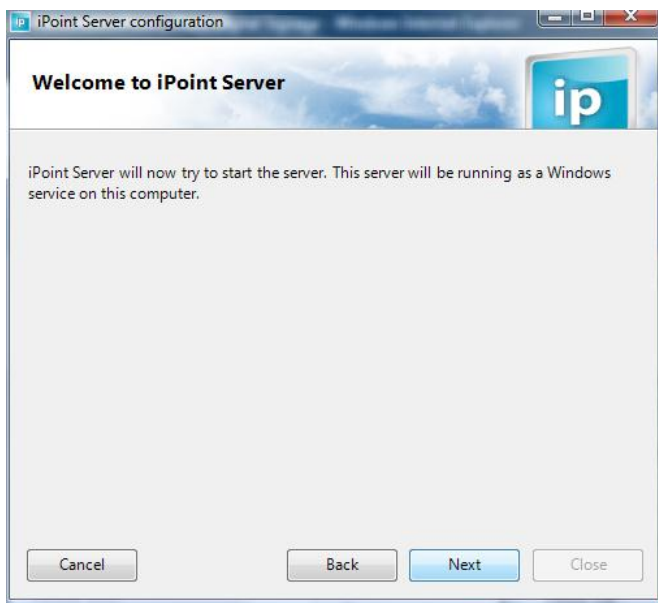
All communication between the server, scheduler(s) and player(s) is done over a standard TCP/IP port. The default value of this port is 8000. Change the port number when needed. Take into account that a given port number is dedicated for all iPoint communication and cannot be used by any other software package.

Click Next to continue.

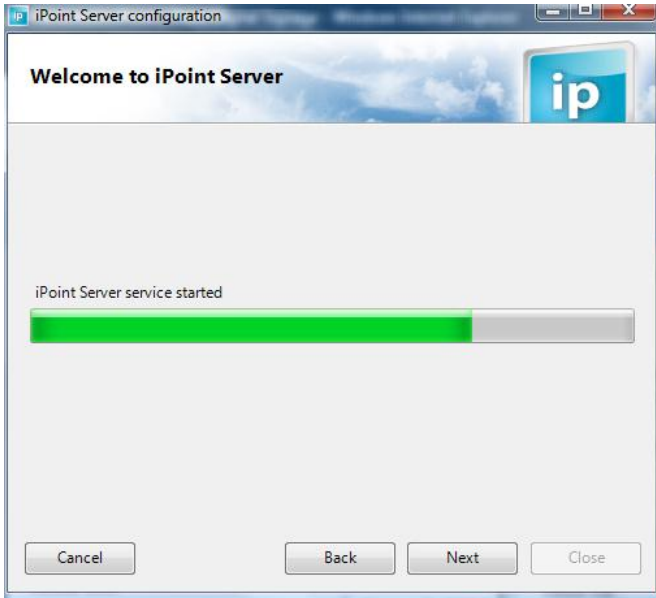
---

**Note:** Check with your system administrator to ensure that you can use this port number.

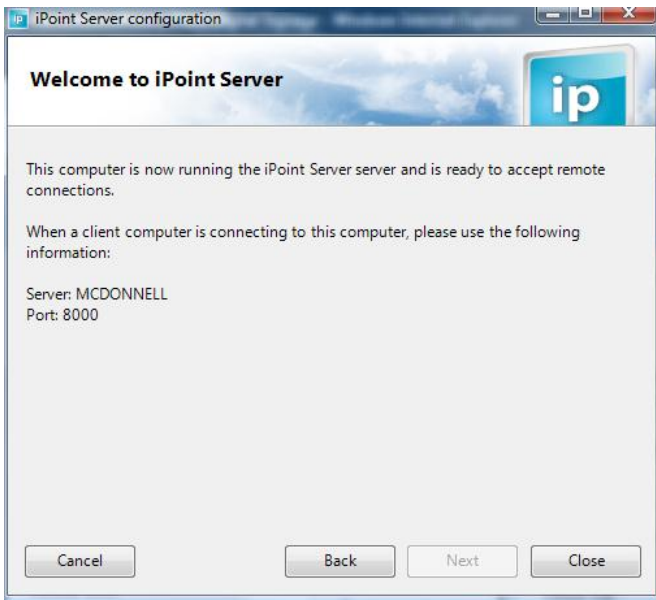
---



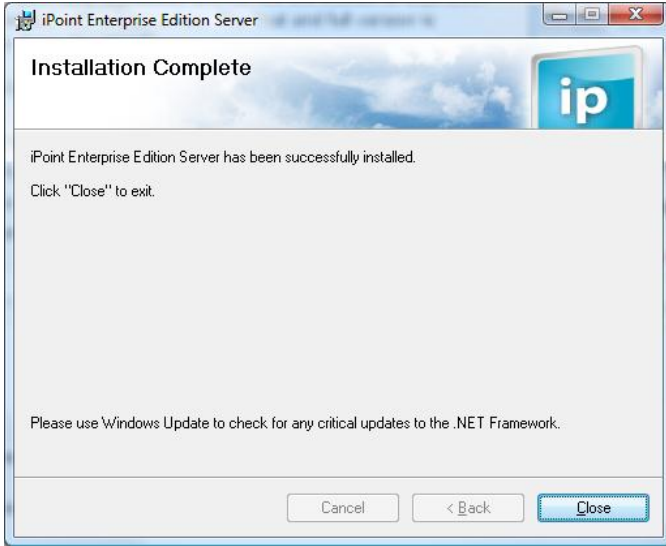
Click Next to initiate the Windows service.



The server is being installed. Click Next when finished.



The Windows service is now running in background. Click Close to exit this wizard.



Click Close to exit the installation process.